

This document will guide you through setup for the portable VR cart from Strivr. Setup should take less than 15 minutes.

### Cart overview

The portable VR cart from Strivr can hold 12 Pico Neo 3 headsets, with 2 controllers per headset. Each drawer holds 4 headsets, 8 controllers, and a USB hub plugged into the main power for the cart. You'll also see a pocket on the inside of the door, for storage of accessories and documents like this one.



MAIN POWER SWITCH

MAIN POWER CABLE

On the left side of the cart, you'll find the main power cable and the main power switch. Make sure the main power switch is in the OFF position prior to set up.

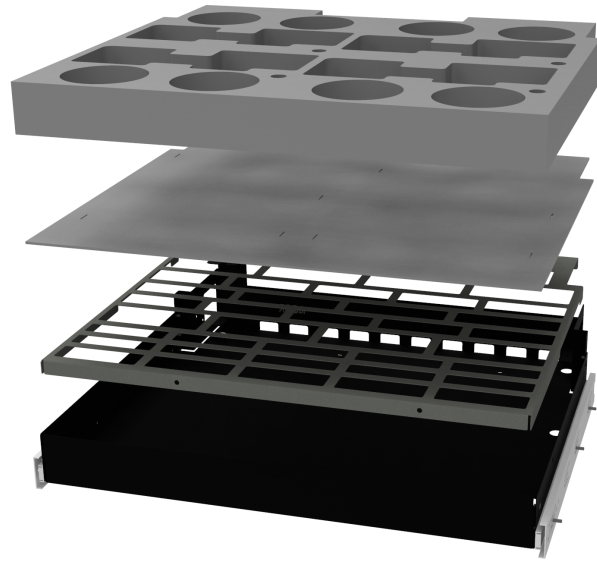
### Setup instructions

#### Position the cart

To begin, wheel your cart to its intended location, near a power outlet (but don't plug it in until after setup is complete.) The rear caster wheels have locks, so make sure the locks are in the unlocked (UP) position while rolling and in the locked (DOWN) position for cart setup. Then open the cart doors, pull out the top drawer, and let's get started.

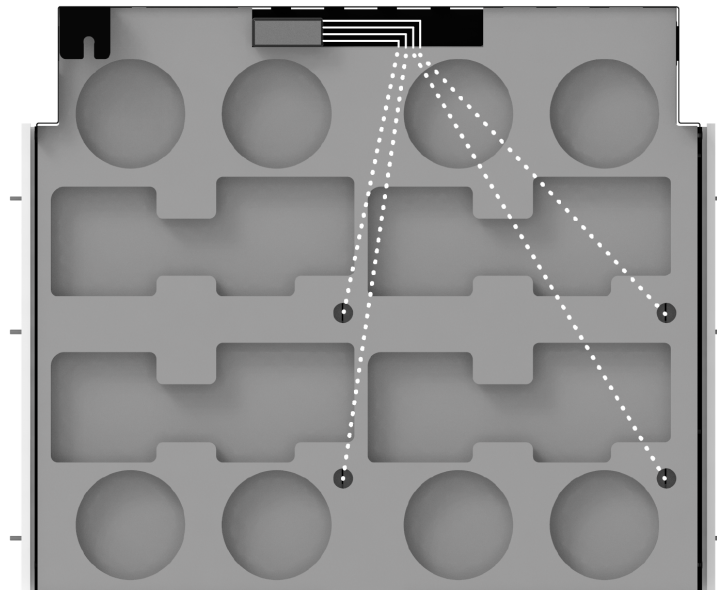
## Drawer setup

Each headset drawer has 3 layers of inserts: a thick foam layer with cutouts for headsets and controllers, a thin foam divider layer with slits that align with holes on the top layer, and a metal layer under which the headset charge cables can run. To set up the system, you'll need to run the headset charge cables that came with your headsets underneath the inserts and up through the holes next to each headset cutout.



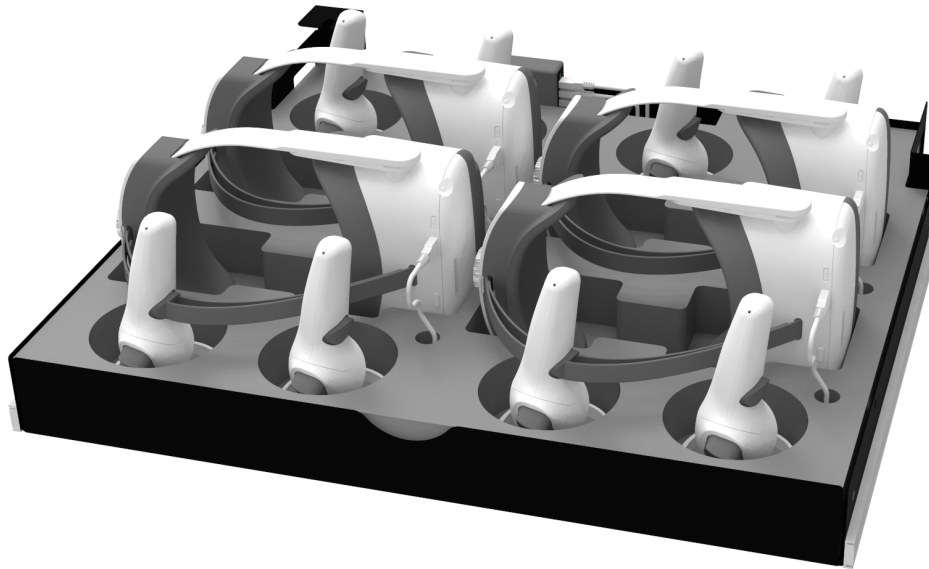
For each drawer,

1. Tilt the inserts up from the back.
2. Connect 4 USB charge cables to the USB hub, then run the cables up through the slits and holes next to each headset cutout.



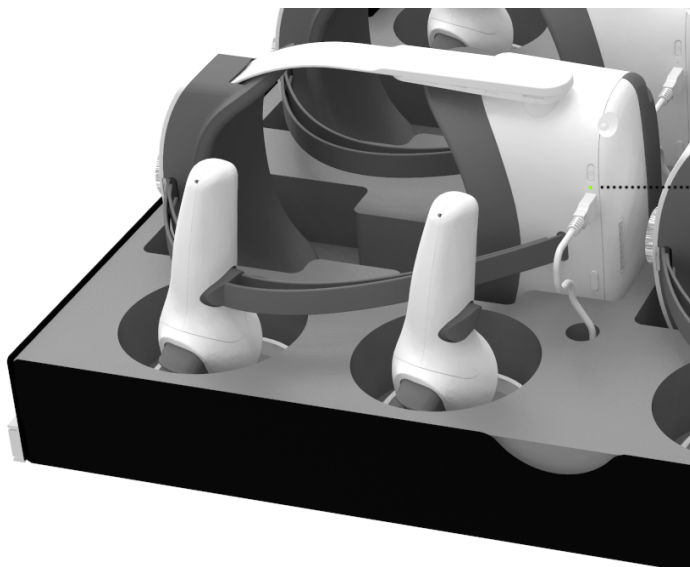
3. Replace the inserts in the drawer with a charge cable protruding from the hole next to each headset cutout.
4. Place each Neo 3 headset in a headset cutout, with the charge port facing toward you. Then place the controllers for each headset in the corresponding circular cutouts, halo down. It's important to keep controllers in the proper location when replacing after each training session, to avoid mixing them up.

5. Plug in a charge cable to each headset.






### Power up

1. Plug in the main power cable for the cart.
2. Turn the main power switch for the cart to the ON position.
3. Check the headset indicator lights. Each headset should show green, yellow, or red.



INDICATOR  
LIGHT

-  CHARGING (ABOVE 90%)
-  CHARGING (BELOW 90%)
-  CHARGING (BELOW 20%)

Headsets will charge fully from 0% in about 2 hours. Strivr recommends plugging headsets in at all times when not training.